
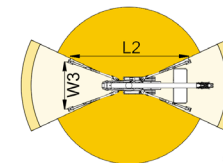
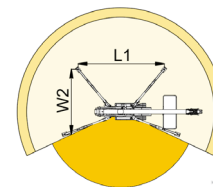
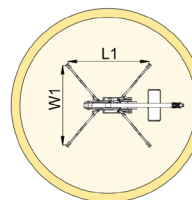
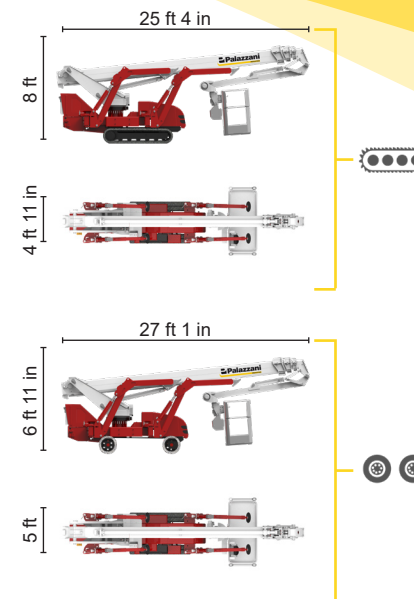
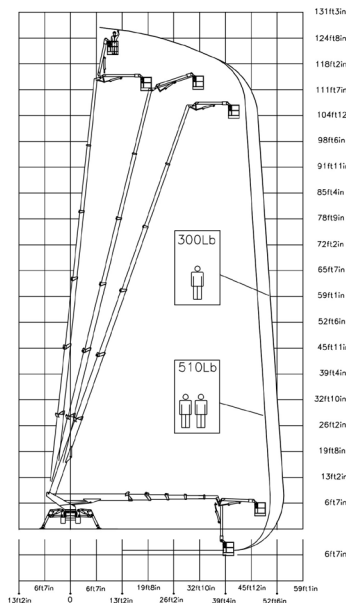
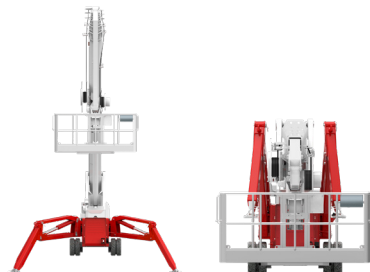




BI-ENERGY



 Diesel
18,2 kW

 Single-phase
Electric motor
110VAC - 2,2 kW



54 ft 2 in	50 ft 10 in	32 ft 10 in	L1	L2	W1	W2	W3
510 lb	264 lb	510/264 lb	16 ft 3 in	20 ft 4 in	15 ft 5 in	12 ft 6 in	9 ft 7 in



TSJ 127/C		127 ft 11 in	54 ft 2 in	510 lb	660° 7 ft 10 in x 2 ft 4 in	90°+80° 9 ft 7 in x 15 ft 5 in	18%	40%	1,12 mph	17548 lb	10566 lb	71,2 psf	90 psf
TSJ 127/W		127 ft 11 in	54 ft 2 in	510 lb	660° 7 ft 10 in x 2 ft 4 in	90°+80° 9 ft 7 in x 15 ft 5 in	31%	12%	0,87 mph	17196 lb	10566 lb	70 psf	82,3 psf

Available power options:

BI-ENERGY (DIESEL+AC)

ECO (AC+BATTERY)

HYBRID (DIESEL+AC+BATTERY)

Characteristics and technical data are informative only and subjected to change without notice.

Palazzani Industrie S.p.A.

Via del Pavione, 4 - 25050 - Paderno F.C. (BS) - Italy

Tel. (+39) 0306857073

info@palazzani.it

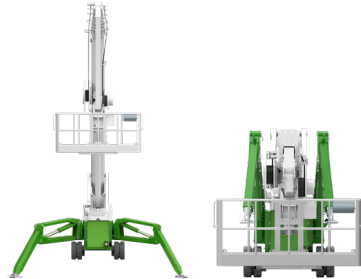
www.palazzani.it



QUALITY SYSTEM
CERTIFIED BY BUREAU VERITAS
= ISO 9001 =



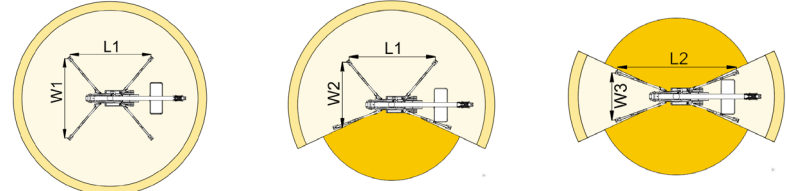
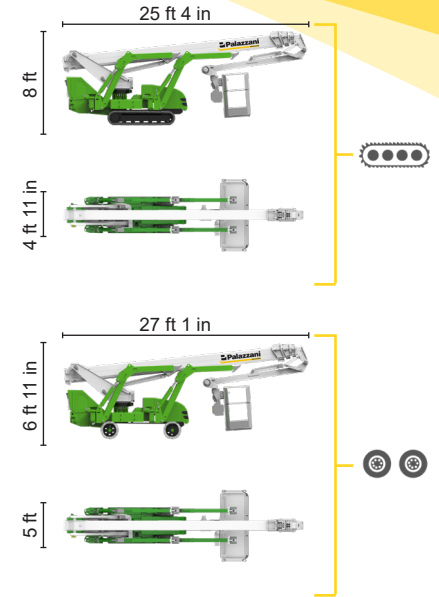
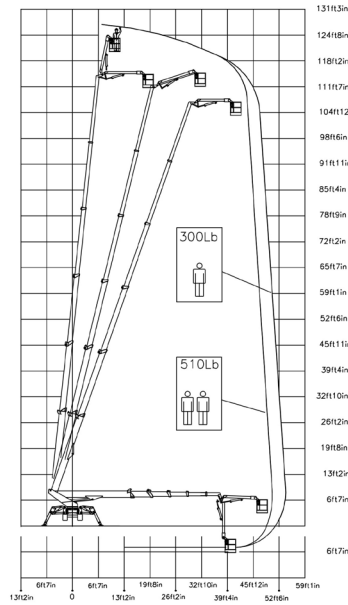
NC 812 A 22



ECO

Single-phase
Electric motor
110VAC - 16 kW

Lithium iron
phosphate battery
LiFePO4
48V - 315 Ah



54 ft 2 in	50 ft 10 in	32 ft 10 in	L1	L2	W1	W2	W3
510 lb	264 lb	510/264 lb	16 ft 3 in	20 ft 4 in	15 ft 5 in	12 ft 6 in	9 ft 7 in

TSJ 127/C	TSJ 127/W	Icon 1	Icon 2	Icon 3	Icon 4	Icon 5	Icon 6	Icon 7	Icon 8	Icon 9	Icon 10	Icon 11	Icon 12
127 ft 11 in	127 ft 11 in	54 ft 2 in	54 ft 2 in	510 lb	510 lb	660°	660°	7 ft 10 in x 2 ft 4 in	7 ft 10 in x 2 ft 4 in	90°+80°	90°+80°	9 ft 7 in x 15 ft 5 in	9 ft 7 in x 15 ft 5 in
18%	31%	40%	12%	1,12 mph	0,87 mph	17548 lb	17196 lb	10566 lb	10566 lb	71,2 psf	70 psf	90 psf	82,3 psf

Available power options:

- BI-ENERGY** (DIESEL+AC)
- ECO** (AC+BATTERY)
- HYBRID** (DIESEL+AC+BATTERY)

Characteristics and technical data are informative only and subjected to change without notice.

Palazzani Industrie S.p.A.
Via del Pavione, 4 - 25050 - Paderno F.C. (BS) - Italy
Tel. (+39) 0306857073
info@palazzani.it
www.palazzani.it






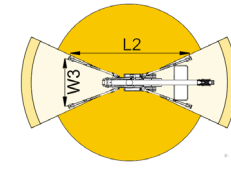
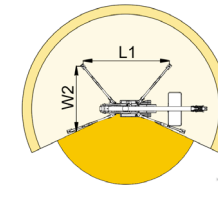
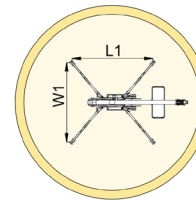
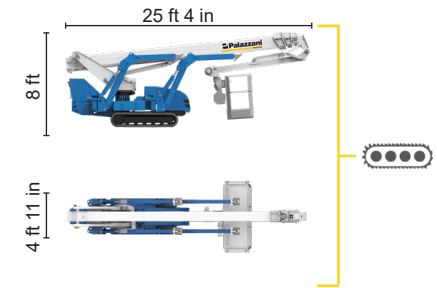
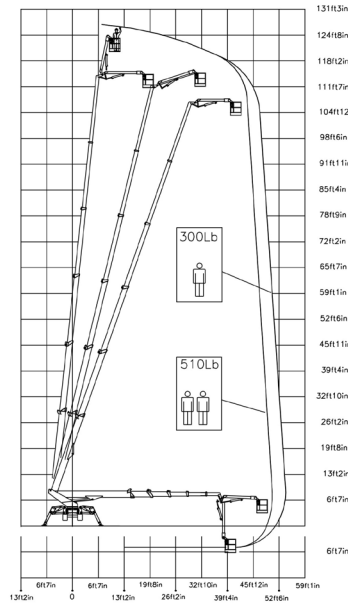
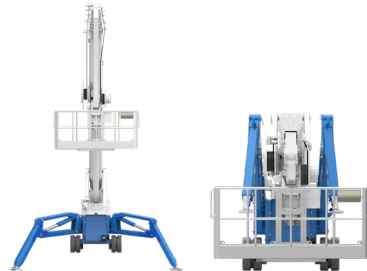
QUALITY SYSTEM
CERTIFIED BY BUREAU VERITAS
= ISO 9001 =

NC 814 A 22




HYBRID²

-  Diesel
14,7 kW
-  Single-phase Electric motor
110VAC - 16 kW
-  Lithium iron phosphate battery
LiFePO4
48V - 315 Ah






54 ft 2 in	50 ft 10 in	32 ft 10 in	L1	L2	W1	W2	W3
510 lb	264 lb	510/264 lb	16 ft 3 in	20 ft 4 in	15 ft 5 in	12 ft 6 in	9 ft 7 in



TSJ 127/C  127 ft 11in 54 ft 2 in 510 lb 660° 7 ft 10 in x 2 ft 4 in 90°+80° 9 ft 7 in x 15 ft 5 in 18% 40% 1,37 mph 17857 lb 10566 lb 72,5 psf 85,4 psf

Available power options:

-  **BI-ENERGY** (DIESEL+AC)
-  **ECO** (AC+BATTERY)
-  **HYBRID²** (DIESEL+AC+BATTERY)

Characteristics and technical data are informative only and subjected to change without notice.

Palazzani Industrie S.p.A.
Via del Pavione, 4 - 25050 - Paderno F.C. (BS) - Italy
Tel. (+39) 0306857073
info@palazzani.it
www.palazzani.it



QUALITY SYSTEM
CERTIFIED BY BUREAU VERITAS
= ISO 9001 =



NC 816 A 22