

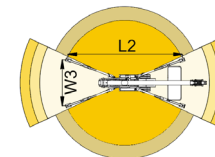
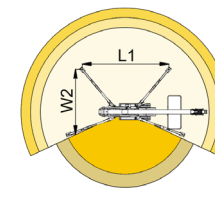
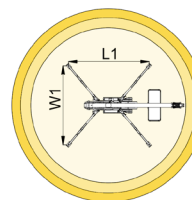
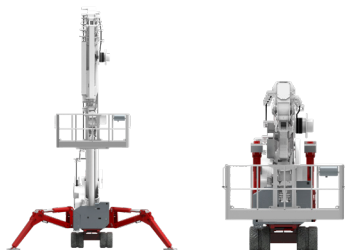
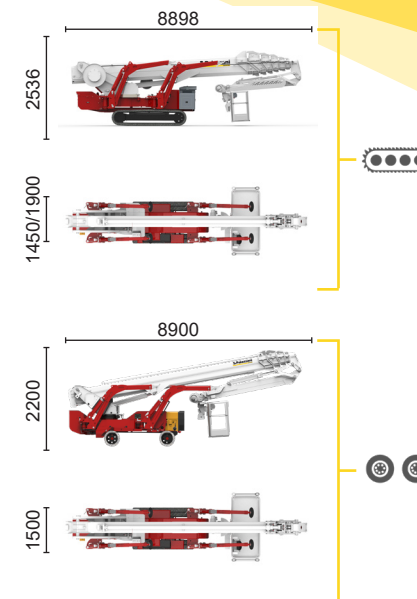
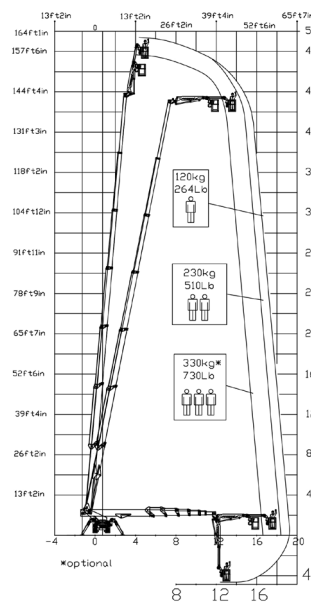




BI-ENERGY



 Diesel
36 kW

 Single-phase
Electric motor
230VAC - 2,2 kW



| 16,8 m | 18,5 m | 19,3 m | 13,8 m | 15,5 m | L1 | L2 | W1 | W2 | W3 |
|---------|--------|--------|---------|------------|---------|---------|---------|---------|---------|
| 330* kg | 230 kg | 120 kg | 330* kg | 120/230 kg | 6460 mm | 7190 mm | 5170 mm | 4655 mm | 4130 mm |



| XTJ 48.1+/C |  | 49 m | 19,3 m | 330 kg* | 660° | 240x70 cm | 90°+80° | 4,13-5,17 m | 23% | 38% | 1,2 km/h | 14150 kg | 75 kN | 4,24 kN/m2 | 6,63 kN/m2 |
|-------------|---|------|--------|---------|------|-----------|---------|-------------|-----|-----|----------|----------|-------|------------|------------|
| XTJ 48.1+/R |  | 49 m | 19,3 m | 330 kg* | 660° | 240x70 cm | 90°+80° | 4,13-5,17 m | 23% | 16% | 1 km/h | 13000 kg | 75 kN | 3,89 kN/m2 | 6,09 kN/m2 |

Available power options:

BI-ENERGY (DIESEL+AC)

Characteristics and technical data are informative only and subjected to change without notice.

Palazzani Industrie S.p.A.

Via del Pavione, 4 - 25050 - Paderno F.C. (BS) - Italy

Tel. (+39) 0306857073

info@palazzani.it

www.palazzani.it



NC 846 A 22