



Palift **TZJ 330+** SPIDER LIFT

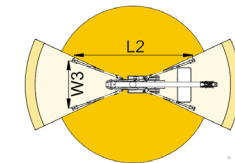
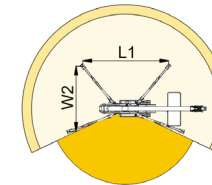
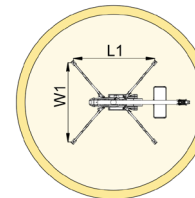
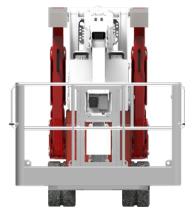
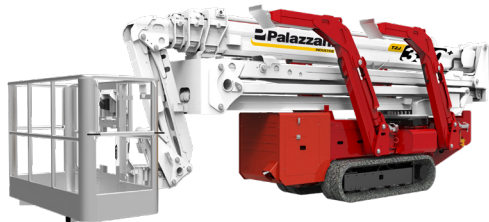
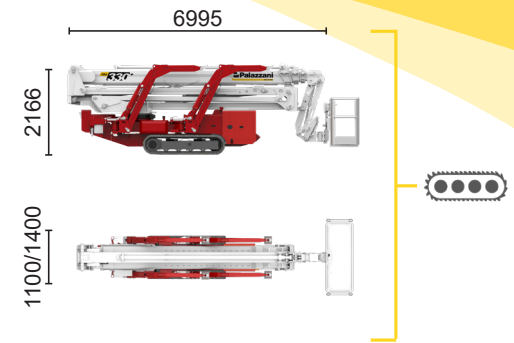
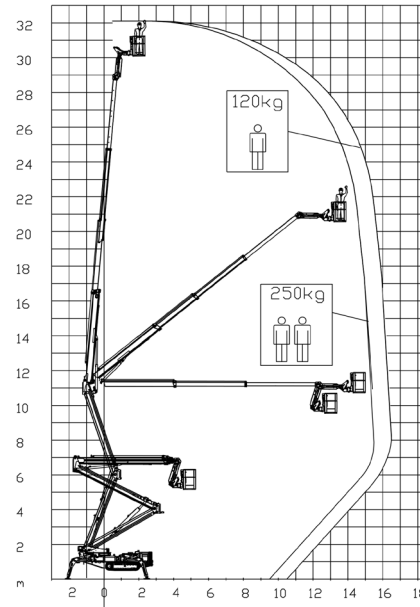
PALAZZANI



BI-ENERGY

 Diesel
18,2 kW

 Inverter actuated
Single-phase
Electric motor
230 VAC - 3 kW



15,4 m	16,4 m	9,5 m	L1	L2	W1	W2	W3
250 kg	120 kg	250/120 kg	4725 mm	6170 mm	4910 mm	4020 mm	3130 mm



TZJ 330+/C



32 m

16,4 m

250 kg

360°

180x70 cm

90°+90°

3,13-4,9 m

18%

32%

2,4 km/h

7200 kg

49 kN

3,1 kN/m²

5,72 kN/m²

Available power options:

ECO (AC+BATTERY)

HYBRID² (DIESEL+AC+BATTERY)

The technical data may deviate +/- 3% from the specified values.

Characteristics and technical data are informative only and subjected to change without notice.

Palazzani Industrie S.p.A.

Via del Pavione, 4 - 25050 - Paderno F.C. (BS) - Italy

Tel. (+39) 0306857073

info@palazzani.it

www.palazzani.it



Palazzani
INDUSTRIE

CE


NC 932 A 24


Palift **TZJ 330+** SPIDER LIFT

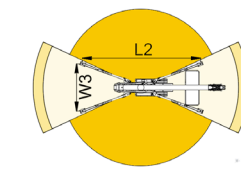
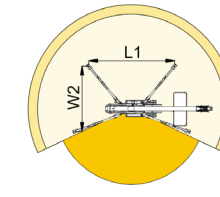
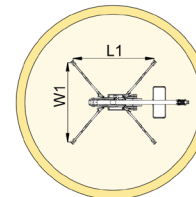
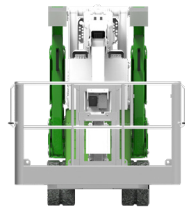
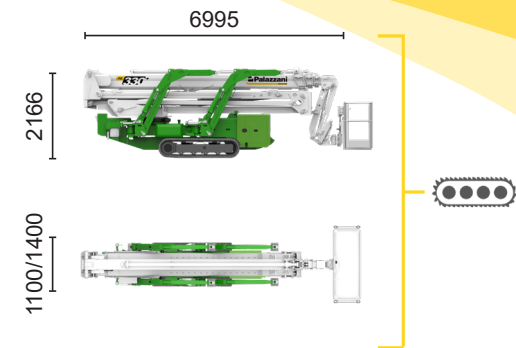
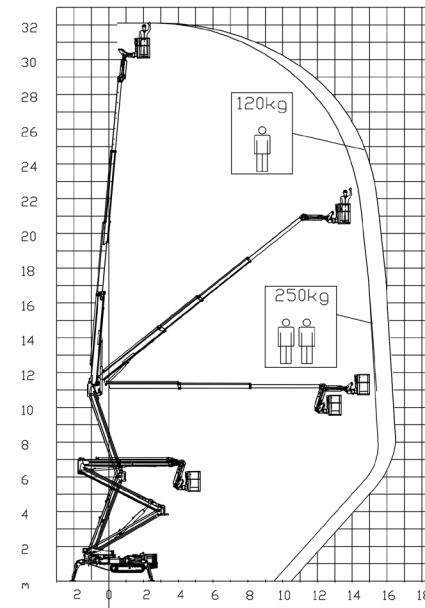
PALAZZANI



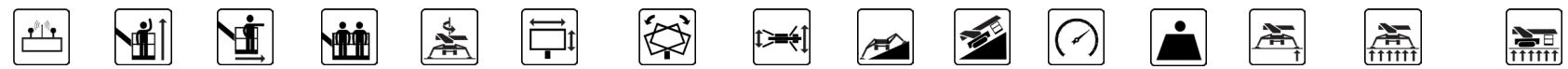
ECO


 Inverter actuated
Electric motor
16 kW

 Lithium iron
phosphate battery
LiFePO4 - 21,5 kWh
(48 V - 420 Ah)





15,4 m	16,4 m	9,5 m	L1	L2	W1	W2	W3
250 kg	120 kg	250/120 kg	4725 mm	6170 mm	4910 mm	4020 mm	3130 mm



TZJ 330+/C		32 m	16,4 m	250 kg	360°	180x70 cm	90°+90°	3,13-4,91 m	18%	32%	2,4 km/h	7200 kg	49 kN	3,1 kN/m2	5,72 kN/m2
------------	---	------	--------	--------	------	-----------	---------	-------------	-----	-----	----------	---------	-------	-----------	------------

Available power options:

-  **BI-ENERGY** (DIESEL+AC)
-  **HYBRID** (DIESEL+AC+BATTERY)

The technical data may deviate +/- 3% from the specified values.

Characteristics and technical data are informative only and subjected to change without notice.

Palazzani Industrie S.p.A.

Via del Pavione, 4 - 25050 - Paderno F.C. (BS) - Italy

Tel. (+39) 0306857073

info@palazzani.it




www.palazzani.it

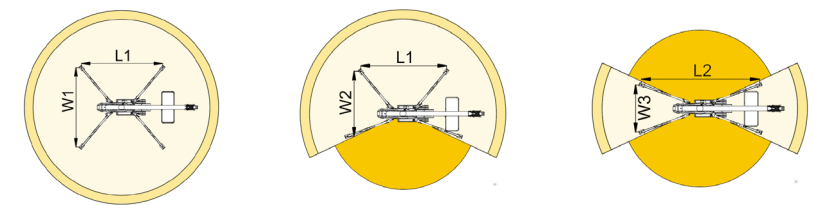
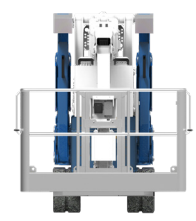
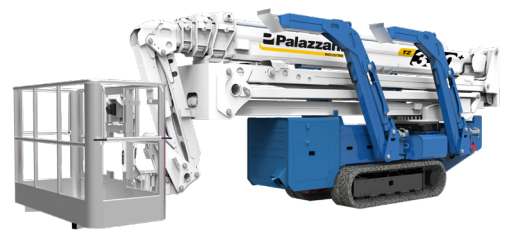
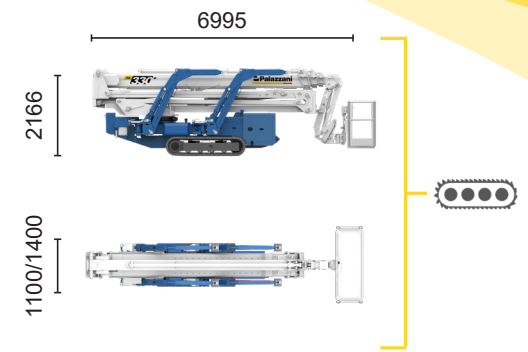
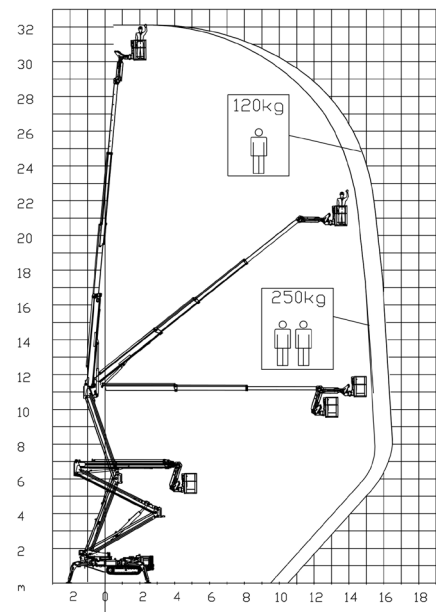


NC 933 A 24

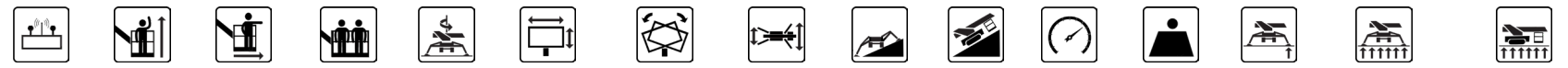
Palift **TZJ 330+** PALAZZANI SPIDER LIFT

HYBRID²

-  Diesel
10,6 kW
-  Inverter actuated
Electric motor
16 kW
-  Lithium iron
phosphate battery
LiFePO4 - 16,1 kWh
(48 V - 315 Ah)



15,4 m	16,4 m	9,5 m	L1	L2	W1	W2	W3
250 kg	120 kg	250/120 kg	4725 mm	6170 mm	4910 mm	4020 mm	3130 mm



TZJ 330+/C		32 m	16,4 m	250 kg	360°	180x70 cm	90°+90°	3,13-4,91 m	18%	32%	1,8 km/h	7640 kg	49 kN	3,22 kN/m ²	5,92 kN/m ²
------------	---	------	--------	--------	------	-----------	---------	-------------	-----	-----	----------	---------	-------	------------------------	------------------------

Available power options:
BI-ENERGY (DIESEL+AC)
ECO (AC+BATTERY)

The technical data may deviate +/- 3% from the specified values.
 Characteristics and technical data are informative only and subjected to change without notice.

Palazzani Industrie S.p.A.
 Via del Pavione, 4 - 25050 - Paderno F.C. (BS) - Italy
 Tel. (+39) 0306857073
 info@palazzani.it
 www.palazzani.it



NC 934 A 24