



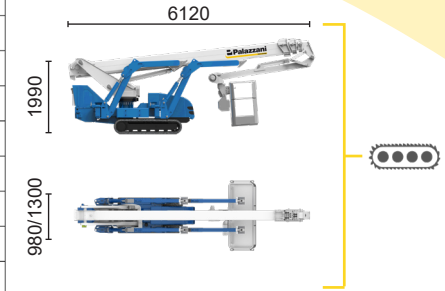
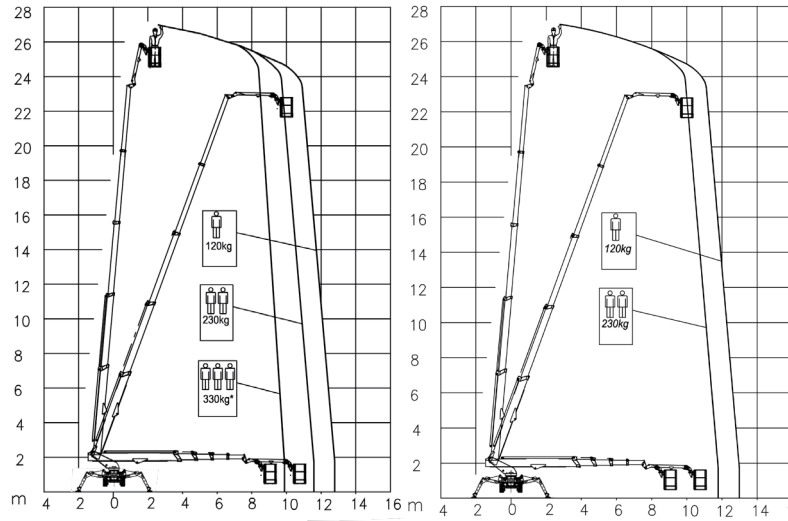


HYBRID²

 Diesel
10,6 kW

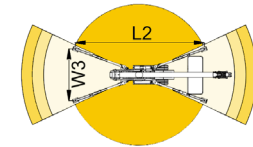
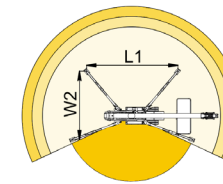
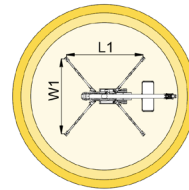
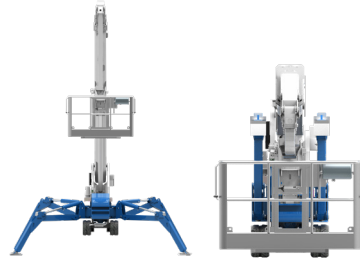
 Inverter actuated
Electric motor
5,5 kW

 Lithium iron
phosphate battery
LiFePO4 - 10,7 kWh
(48 V - 210 Ah)



*optional

9,9 m	11,6 m	12,8 m	7,3 m	11,6 m	12,8 m	7,3 m			
330 kg*	230 kg	120 kg	120/230 kg	230 kg	120 kg	230/120 kg			
L1	L2	W1	W2	W3	L1	L2	W1	W2	W3
4927 mm	6436 mm	4791 mm	3828 mm	2865 mm	4927 mm	6436 mm	4791 mm	3828 mm	2865 mm



TSJ 27/C  27 m 12,8 m 330 kg* 660° 180x70 cm 90°+80° 2,86-4,79 m 44% 42% 1,2 km/h 4950 kg 29 kN 2,1 kN/m² 4,49 kN/m²

Available power options:
BI-ENERGY (DIESEL+AC)
ECO (AC+BATTERY)

The technical data may deviate +/- 3% from the specified values.
 Characteristics and technical data are informative only and subjected to change without notice.

Palazzani Industrie S.p.A.
 Via del Pavione, 4 - 25050 - Paderno F.C. (BS) - Italy
 Tel. (+39) 0306857073
 info@palazzani.it
 www.palazzani.it



NC 912 A 24