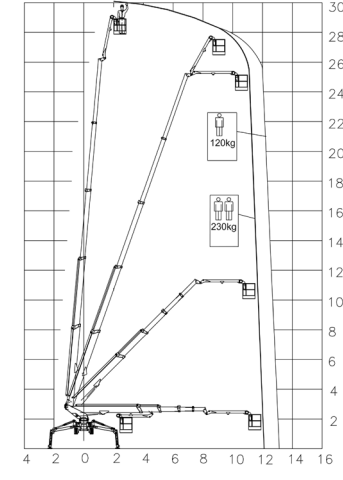
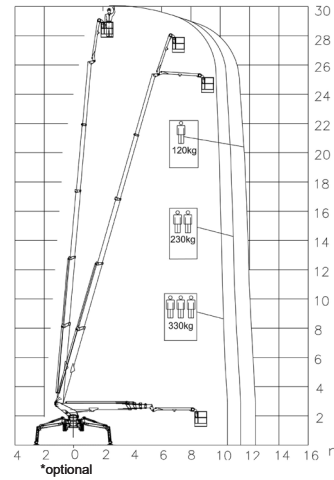


**HYBRID<sup>2</sup>**

Diesel  
10,6 kW

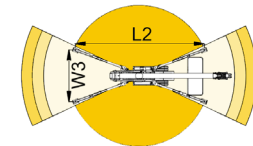
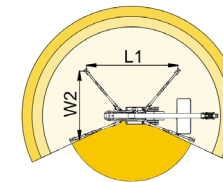
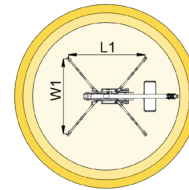
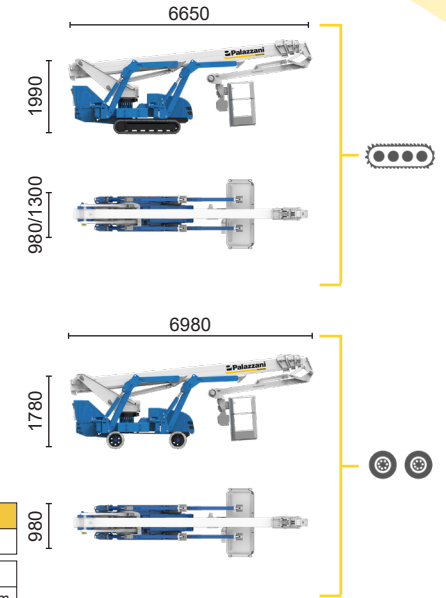
Inverter actuated  
Electric motor  
5,5 kW

Lithium iron  
phosphate battery  
LiFePO4 - 10,7 kWh  
(48 V - 210 Ah)



10,5 m	11,4 m	12,4 m	7,5 m	
330 kg*	230 kg	120 kg	120/230 kg	
L1	L2	W1	W2	W3
4927 mm	6436 mm	4791 mm	3828 mm	2865 mm

12 m	13 m	8 m		
230 kg	120 kg	120/230 kg		
L1	L2	W1	W2	W3
4927 mm	6436 mm	4791 mm	3828 mm	2865 mm



TSJ 30.1/C		30 m	13 m	330 kg*	660°	180x70 cm	90°+80°	2,86-4,79 m	44%	42%	1,2 km/h	4940 kg	29 kN	2,09 kN/m <sup>2</sup>	4,13 kN/m <sup>2</sup>
------------	--	------	------	---------	------	-----------	---------	-------------	-----	-----	----------	---------	-------	------------------------	------------------------

TSJ 30.1/R		30 m	13 m	330 kg*	660°	180x70 cm	90°+80°	2,86-4,79 m	44%	29%	1,2 km/h	5040 kg	29 kN	2,14 kN/m <sup>2</sup>	4,01 kN/m <sup>2</sup>
------------	--	------	------	---------	------	-----------	---------	-------------	-----	-----	----------	---------	-------	------------------------	------------------------

Available power options:

**BI-ENERGY** (DIESEL+AC)

**ECO** (AC+BATTERY)

The technical data may deviate +/- 3% from the specified values.

Characteristics and technical data are informative only and subjected to change without notice.

Palazzani Industrie S.p.A.

Via del Pavione, 4 - 25050 - Paderno F.C. (BS) - Italy

Tel. (+39) 0306857073

info@palazzani.it

www.palazzani.it

