




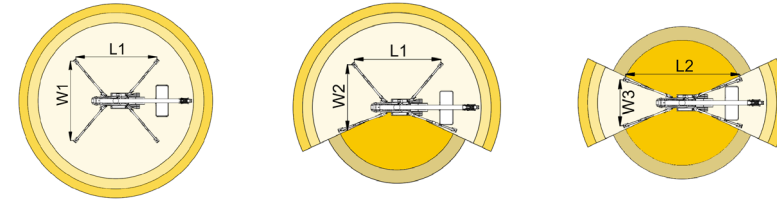
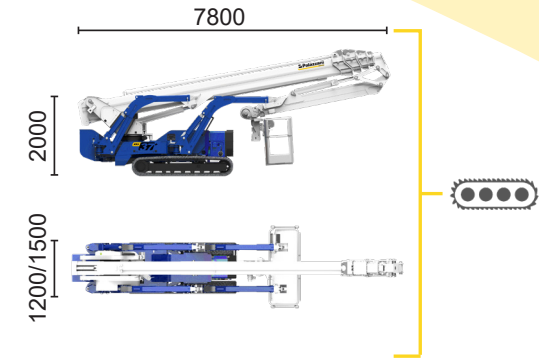
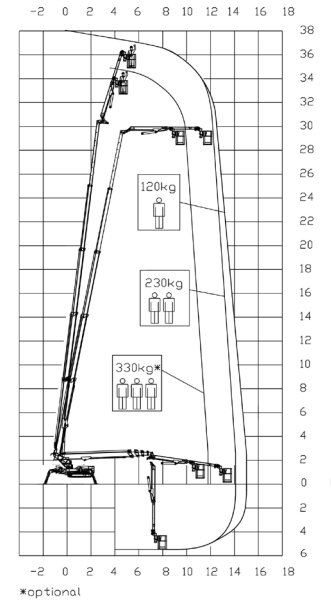
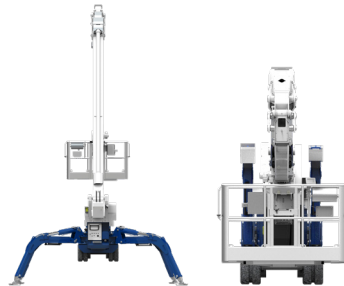


HYBRID²

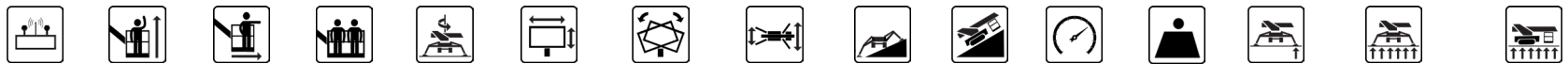
 Diesel
10,6 kW

 Inverter actuated
Electric motor
16 kW

 Lithium iron
phosphate battery
LiFePO4 - 16,1 kWh
(48 V - 315 Ah)




11,8 m	14,1 m	15 m	7,3 m	9,5 m	L1	L2	W1	W2	W3
330 kg*	230 kg	120 kg	330 kg*	120/230 kg	5535 mm	7160 mm	5260 mm	3840 mm	2680 mm



XTJ 37+/C  37 m 15 m 330 kg* 660° 180x70 cm 90°+80° 2,68-5,26 m 23% 36% 2,5 km/h 7590 kg 55 kN 2,61 kN/m² 5,41 kN/m²

Available power options:

 **BI-ENERGY** (DIESEL+AC)

 **ECO** (AC+BATTERY)

The technical data may deviate +/- 3% from the specified values.

Characteristics and technical data are informative only and subjected to change without notice.

Palazzani Industrie S.p.A.

Via del Pavione, 4 - 25050 - Paderno F.C. (BS) - Italy

Tel. (+39) 0306857073

info@palazzani.it

www.palazzani.it

