



**ECO**



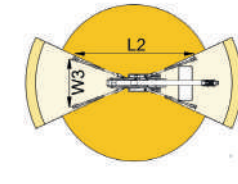
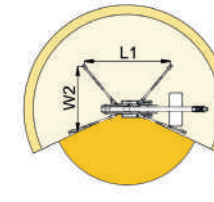
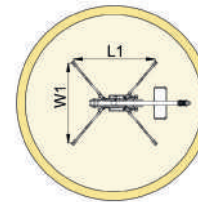
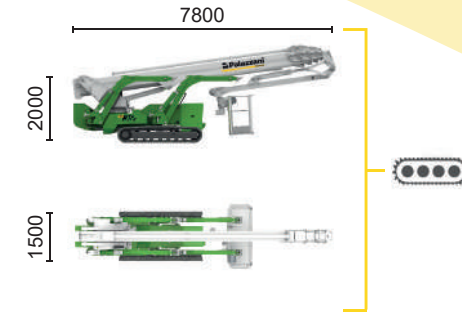
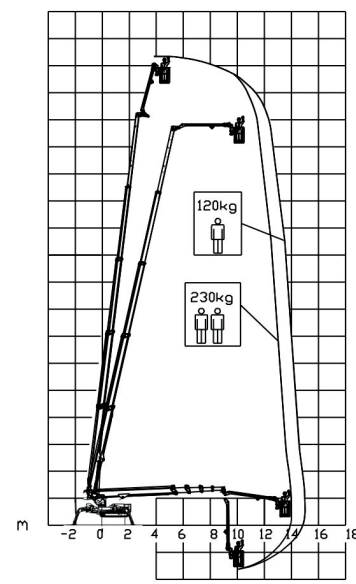
Inverter actuated  
Electric motor  
16 kW



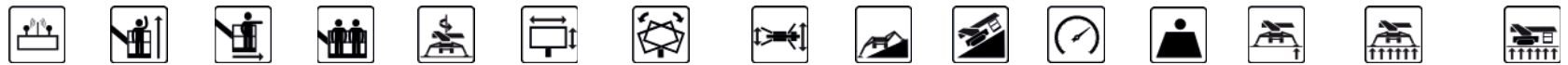
Lithium iron  
phosphate battery  
LiFePO4 - 16,9 kWh  
(48 V - 330 Ah)



Type 2 plug charge



14 m	15 m	8,5 m	L1	L2	W1	W2	W3
230 kg	120 kg	230/120 kg	5535 mm	7160 mm	5260 mm	3975 mm	2680 mm



TSJ 35.1/C		34,7 m	15 m	230 kg	660°	180x70 cm	90°+80°	2,68-5,26 m	23%	36%	1,8 km/h	7235 kg	47 kN	2,48 kN/m2	5,15 kN/m2
------------	--	--------	------	--------	------	-----------	---------	-------------	-----	-----	----------	---------	-------	------------	------------

Available power options:

**BI-ENERGY** (DIESEL+AC)

**HYBRID** (DIESEL+AC+BATTERY)

The technical data may deviate +/- 3% from the specified values.

Characteristics and technical data are informative only and subjected to change without notice.

Palazzani Industrie S.p.A.

Via del Pavione, 4 - 25050 - Paderno F.C. (BS) - Italy

Tel. (+39) 0306857073

info@palazzani.it

www.palazzani.it



NC 922 A 24