



ECO



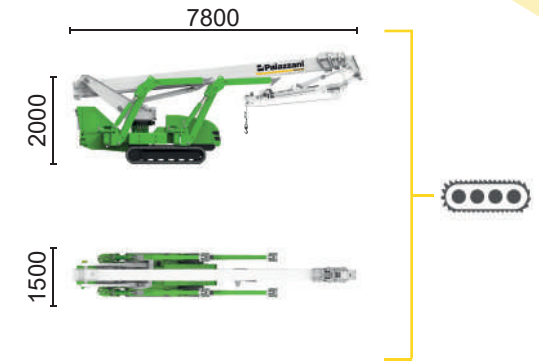
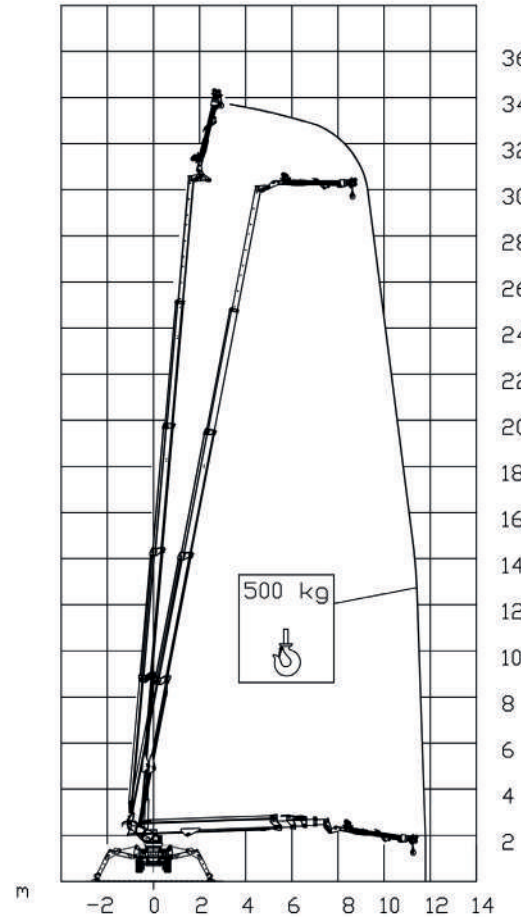
Inverter actuated
Electric motor
16 kW



Lithium iron
phosphate battery
LiFePO4 - 16,9 kWh
(48 V - 330 Ah)



Type 2 plug charge



TSJ 35.1/C



33,7 m

11,8 m

500 kg

660°

180x70 cm

90°+80°

2,68-5,26 m

23%

36%

1,8 km/h

7235 kg

47 kN

2,48 kN/m²

5,15 kN/m²

Available power options:

BI-ENERGY (DIESEL+AC)

HYBRID (DIESEL+AC+BATTERY)

The technical data may deviate +/- 3% from the specified values.

Characteristics and technical data are informative only and subjected to change without notice.

Palazzani Industrie S.p.A.

Via del Pavione, 4 - 25050 - Paderno F.C. (BS) - Italy

Tel. (+39) 0306857073

info@palazzani.it

www.palazzani.it



NC 923 A 24