



**BI-ENERGY**



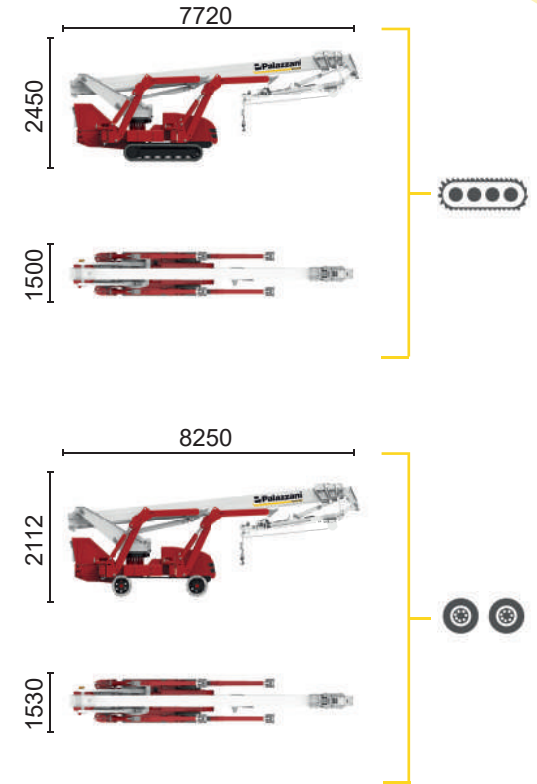
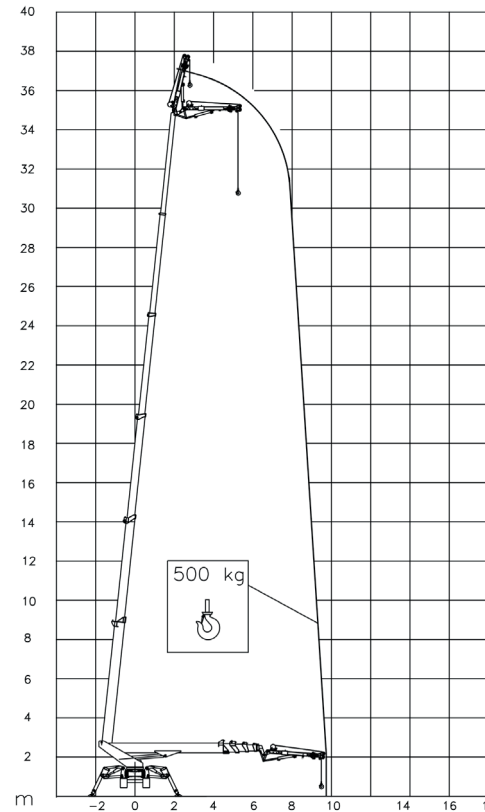
Diesel  
18,2 kW



Single-phase  
Electric motor  
230 VAC - 2,2 kW



Three-phase  
Electric motor  
400 VAC - 5,5 kW



<b>TSJ 39/C</b>		37 m	9,7 m	500 kg	660°	240x70 cm	90°+80°	2,92-4,7 m	18%	40%	1,8 km/h	7960 kg	51 kN	3,41 kN/m <sup>2</sup>	4,3 kN/m <sup>2</sup>
-----------------	--	------	-------	--------	------	-----------	---------	------------	-----	-----	----------	---------	-------	------------------------	-----------------------

<b>TSJ 39/R</b>		37 m	9,7 m	500 kg	660°	240x70 cm	90°+80°	2,92-4,7 m	31%	12%	1,4 km/h	7800 kg	51 kN	3,34 kN/m <sup>2</sup>	3,94 kN/m <sup>2</sup>
-----------------	--	------	-------	--------	------	-----------	---------	------------	-----	-----	----------	---------	-------	------------------------	------------------------

Available power options:

**ECO** (AC+BATTERY)

**HYBRID** (DIESEL+AC+BATTERY)

The technical data may deviate +/- 3% from the specified values.

Characteristics and technical data are informative only and subjected to change without notice.

Palazzani Industrie S.p.A.

Via del Pavione, 4 - 25050 - Paderno F.C. (BS) - Italy

Tel. (+39) 0306857073

info@palazzani.it

www.palazzani.it



NC 927 A 24