
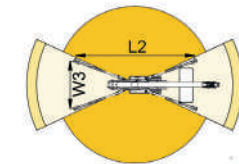
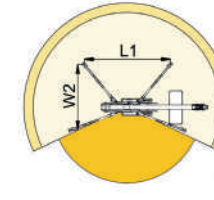
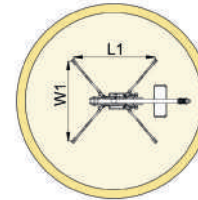
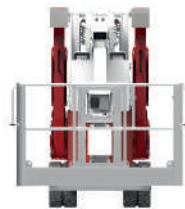
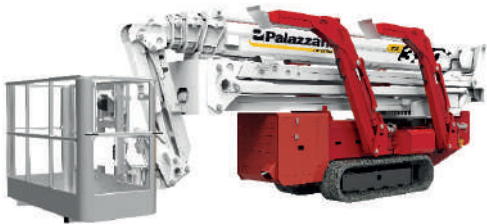
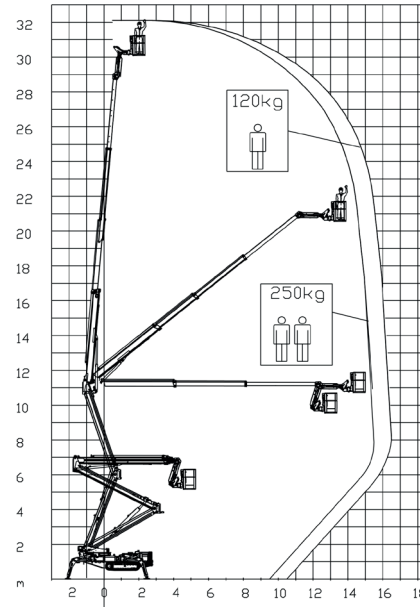




BI-ENERGY


 Diesel
18,2 kW

 Inverter actuated
Single-phase
Electric motor
230 VAC - 3 kW



15,4 m	16,4 m	9,5 m	L1	L2	W1	W2	W3
250 kg	120 kg	250/120 kg	4725 mm	6170 mm	4910 mm	4020 mm	3130 mm



TZ 330+/C  32 m 16,4 m 250 kg 360° 180x70 cm 90°+90° 3,13-4,9 m 18% 32% 2,4 km/h 7200 kg 49 kN 3,1 kN/m² 5,72 kN/m²

Available power options:

ECO (AC+BATTERY)

HYBRID (DIESEL+AC+BATTERY)

The technical data may deviate +/- 3% from the specified values.

Characteristics and technical data are informative only and subjected to change without notice.

Palazzani Industrie S.p.A.

Via del Pavione, 4 - 25050 - Paderno F.C. (BS) - Italy

Tel. (+39) 0306857073

info@palazzani.it

www.palazzani.it



NC 932 A 24