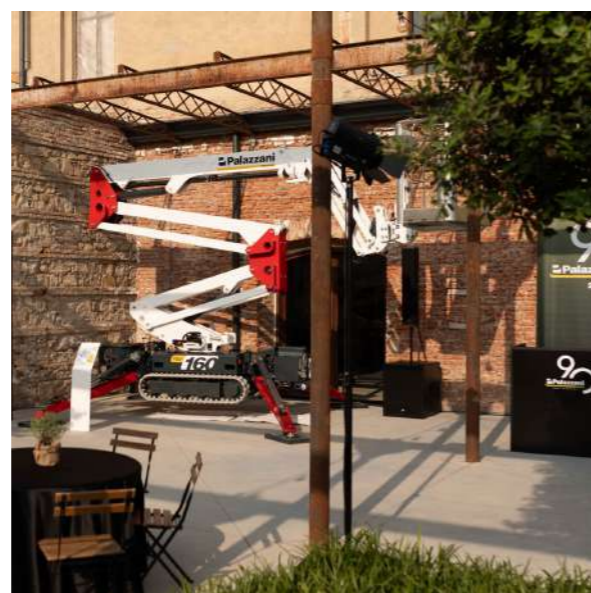
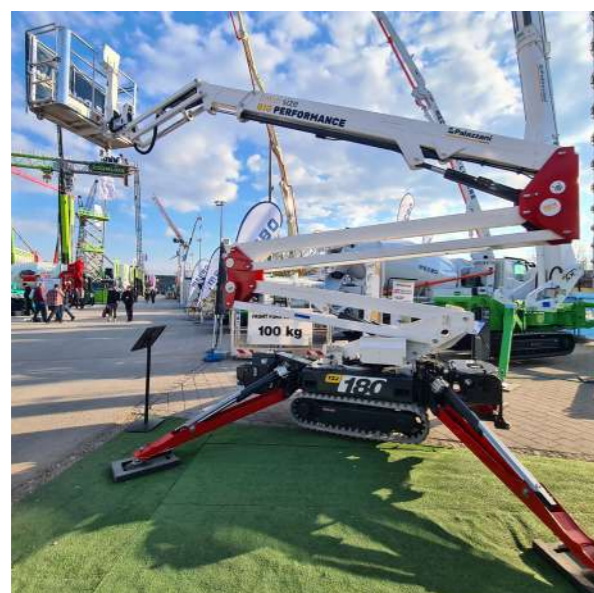
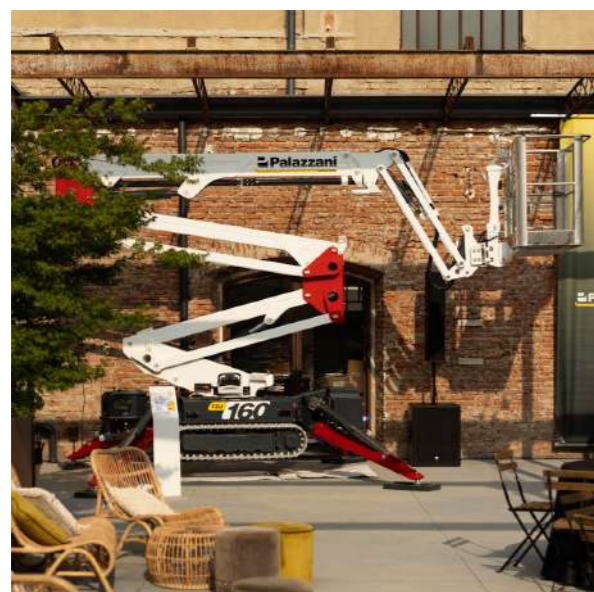


With **Us**, You can



HIGH
GREEN
SAFE



16 m



7,5 m



230 kg



Petrol
Diesel
Eco/Eco Pro



Crawlers



STANDARD EQUIPMENT

- Available power options: Petrol Honda engine i-GX 390 8.7 kW, Diesel Kubota Engine 10.6 kW, Eco 5.6 kWh, Eco Pro 11.2 kWh (AC + Battery)
- Hydraulic steering and transmission on rubber tracks
- Extendable tracks 780/960 mm
- Inclinometer while transferring with sound alarm
- Hydraulic set-up with 4 independent outriggers, of the fixed type
- Turntable rotation at 360°
- CANBUS electronics
- Steel made telescopic double articulated boom with jib
- Hydraulic and electric lines inside the boom
- Air/water supplementary line along the boom with internal hose
- Aluminium cage 140x70x110 cm
- Cage with automatic self-levelling
- Cage with support of fast disassembling for narrow passages
- Geometric platform without any outreach-limiting device
- Load sensor on the cage
- Cable control with mini-display for ground/cage
- 230 VAC electric plug on the cage
- CE Mark homologation certificates, manuals, stickers and spares book in English language



AUTOMATION PACK (AUTOMATIC SET-UP + "RETURN TO HOME" FUNCTION)



CUSTOMIZED COLOURS



NON-MARKING TRACKS



RADIO CONTROL WITH MINI DISPLAY



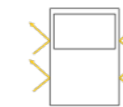
CONTROL FOOT PEDAL ON THE CAGE



LIFTING HOOK IN PLACE OF THE BASKET 260 kg



CAGE FOR ONE MAN 70x70x110 CM*



FIBER GLASS CAGE FOR ONE MAN 70x70x110 CM*



PADS WITH STOP FOR OUTRIGGERS



BASKET ROTATION 90°+90°



DIAGNOSTIC CABLE KIT



GROUNDING CABLE INSIDE THE BOOM (IN PLACE OF AIR/WATER PIPE)



SINGLE-PHASE ELECTRIC MOTOR 230 VAC - 2,2 kW WITH STARTER BATTERY CHARGER



DRINK HOLDER IN THE BASKET



FLASHING LIGHTS ON THE STABILIZERS



EMERGENCY ELECTROPUMP



36 MONTHS OF WARRANTY ON THE BATTERY



INTERCONNECTION KIT + 3 YEARS OF FEE INCLUDED

