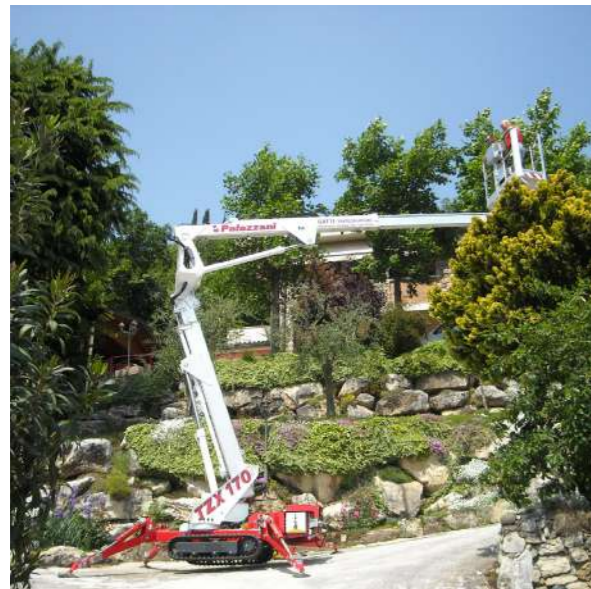


With Us, You can



HIGH
GREEN
SAFE



17 m



7,8 m



200 kg



Bi-energy
Eco



Crawlers
Wheels



STANDARD EQUIPMENT

- CANBUS electronics
- Hydraulic steering and transmission on rubber tracks with 2 speeds
- Hydraulic set-up with 4 independent outriggers, of the fixed type
- 2 aluminium made articulated double telescopic booms
- Safe working load 200 kg
- Aluminium cage 140x70x110 cm
- Cage with automatic self-levelling
- Cage with hydraulic rotation 90° + 90°
- Cage equipped with support of fast disassembling for narrow passages
- Boom slewing under any condition of load and set-up at 360°
- Electric and proportional controls and dual panel: cage panel and ground panel
- 230 VAC electric plug on the cage
- CE Mark homologation certificates, manuals, stickers and spares book in English language



AIR/WATER SUPPLEMENTARY LINE ALONG THE BOOM WITH INTERNAL HOSE



PROTECTION OF OUTRIGGERS' CYLINDERS



AUTOMATIC SET-UP AND SELF-LEVELLING OF THE OUTRIGGERS



BASKET ANTI-COLLISION KIT WITH ULTRASONIC SENSORS AND LASERS



NON-MARKING TRACKS



CONTROL FOOT PEDAL ON THE CAGE



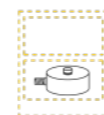
PADS FOR OUTRIGGERS



"RETURN TO HOME" FUNCTION



DIAGNOSTIC CABLE KIT



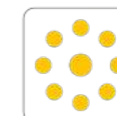
LOAD CELL



GROUNDING CABLE INSIDE THE BOOM



CUSTOMIZED COLOURS



LED LIGHT



RADIO CONTROL



INTER-PHONIC COMMUNICATION SYSTEM



ELECTRONIC ANEMOMETER



DRINK HOLDER IN THE BASKET



HANDS HEATER IN THE BASKET



EMERGENCY ELECTROPUMP KIT



36 MONTHS OF WARRANTY ON THE BATTERY



BASKET STAIRS



FLASHING LIGHTS ON THE STABILIZERS

