

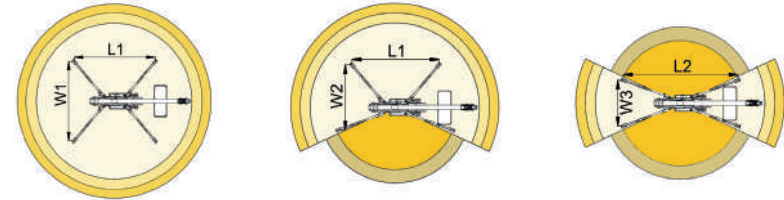
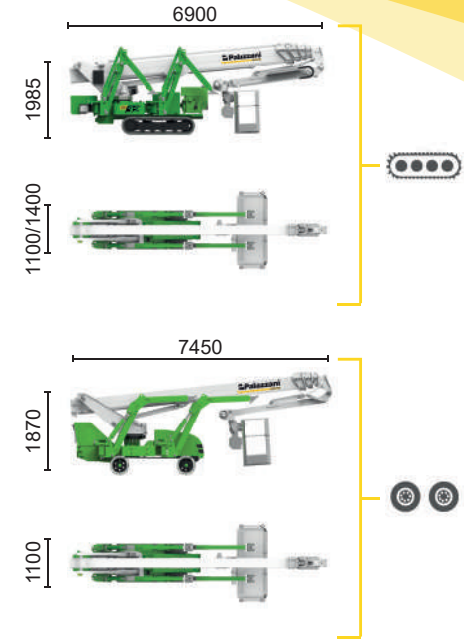
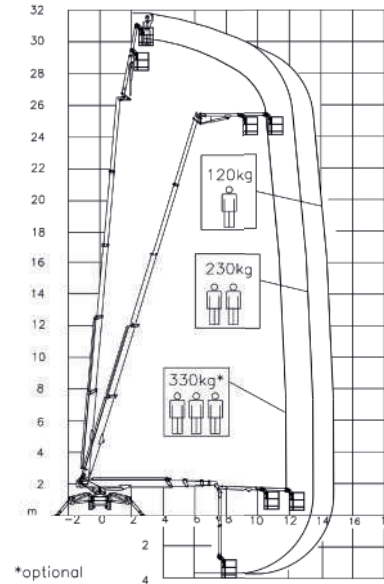




ECO

 Inverter actuated
Electric motor
16 kW

 Lithium iron
phosphate battery
LiFePO4 - 21,5 kWh
(48 V - 420 Ah)



11,7 m	13,3 m	14,3 m	8,4 m	10 m	L1	L2	W1	W2	W3
330 kg*	230 kg	120 kg	330 kg*	120/230 kg	5125 mm	6460 mm	4760 mm	3785 mm	2820 mm

XTJ 32/C															
XTJ 32/R															

Available power options:
BI-ENERGY (DIESEL+AC)

The technical data may deviate +/- 3% from the specified values.
 Characteristics and technical data are informative only and subjected to change without notice.

Palazzani Industrie S.p.A.
 Via del Pavione, 4 - 25050 - Paderno F.C. (BS) - Italy
 Tel. (+39) 0306857073
 info@palazzani.it
 www.palazzani.it



NC 937 A 24