

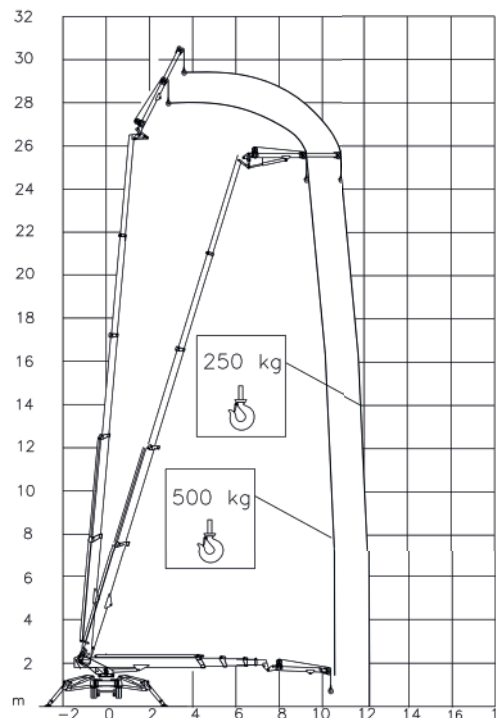




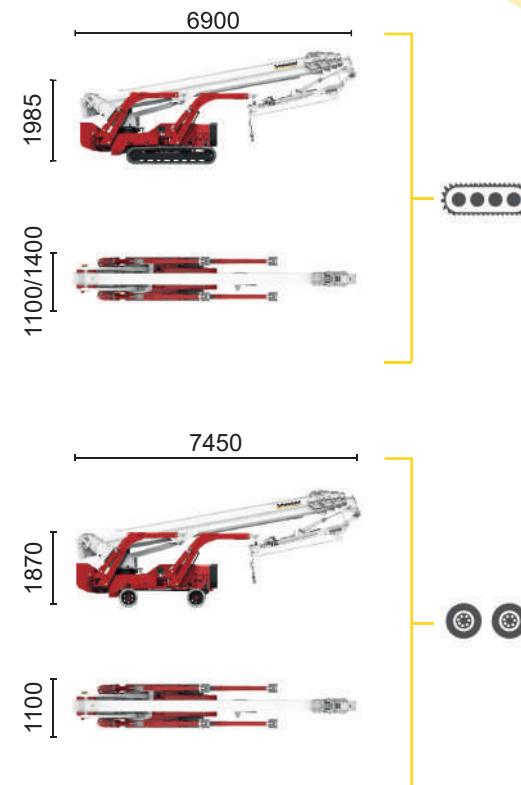
**BI-ENERGY**



 Diesel  
18,2 kW

 Inverter actuated  
Single-phase  
Electric motor  
230 VAC - 3 kW



|               |               |
|---------------|---------------|
| <b>500 kg</b> | <b>250 kg</b> |
| 10 m          | 11,6 m        |



|                 |   |      |        |        |      |           |         |             |     |     |        |         |       |                        |                        |
|-----------------|---|------|--------|--------|------|-----------|---------|-------------|-----|-----|--------|---------|-------|------------------------|------------------------|
| <b>XTJ 32/C</b> |  | 31 m | 11,6 m | 500 kg | 660° | 180x70 cm | 90°+80° | 2,82-4,76 m | 16% | 32% | 3 km/h | 5940 kg | 35 kN | 2,43 kN/m <sup>2</sup> | 4,78 kN/m <sup>2</sup> |
| <b>XTJ 32/R</b> |  | 31 m | 11,6 m | 500 kg | 660° | 180x70 cm | 90°+80° | 2,82-4,76 m | 16% | 18% | 2 km/h | 5940 kg | 35 kN | 2,43 kN/m <sup>2</sup> | 4,78 kN/m <sup>2</sup> |

Available power options:  
**ECO** (AC+BATTERY)

The technical data may deviate +/- 3% from the specified values.  
Characteristics and technical data are informative only and subjected to change without notice.

Palazzani Industrie S.p.A.  
Via del Pavione, 4 - 25050 - Paderno F.C. (BS) - Italy  
Tel. (+39) 0306857073  
info@palazzani.it  
www.palazzani.it



NC 936 A 24