




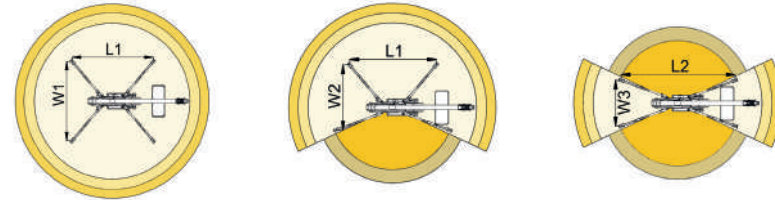
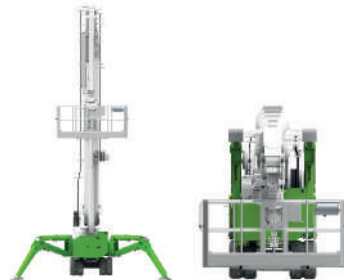
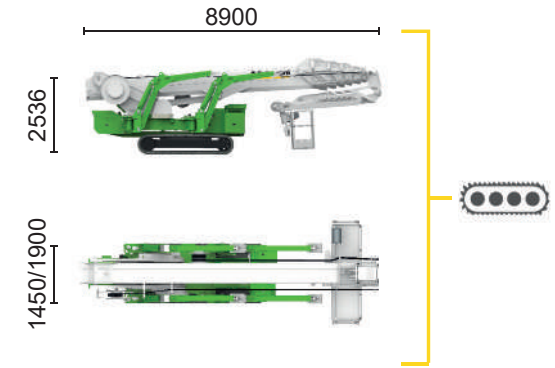
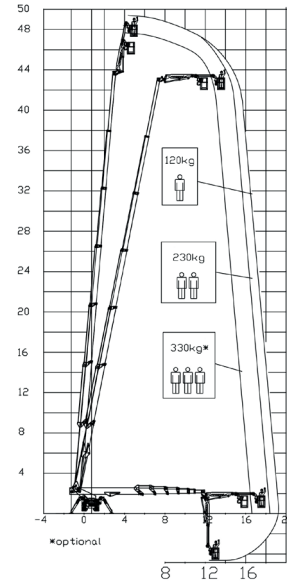


ECO

 Inverter actuated
Electric motor
16 kW

 Lithium iron
phosphate battery
LiFePO4 - 29,1 kWh
(48 V - 570 Ah)

 Type 2 plug charge



14,5 m	18,5 m	19,5 m	12,5 m	16,5 m	L1	L2	W1	W2	W3
330 kg*	230 kg	120 kg	330 kg*	120/230 kg	6460 mm	7190 mm	5170 mm	4655 mm	4130 mm



XTJ 48.1+/C  49 m 19,5 m 330 kg* 660° 240x70 cm 90°+80° 4,13-5,17 m 16% 42% 1,2 km/h 14980 kg 95 kN 4,48 kN/m2 7,01 kN/m2

Available power options:
BI-ENERGY (DIESEL+AC)

The technical data may deviate +/- 3 % from the specified values.
 Characteristics and technical data are informative only and subjected to change without notice.

Palazzani Industrie S.p.A.
 Via del Pavione, 4 - 25050 - Paderno F.C. (BS) - Italy
 Tel. (+39) 0306857073
 info@palazzani.it
 www.palazzani.it



NC 1028 A 25