



**ECO**



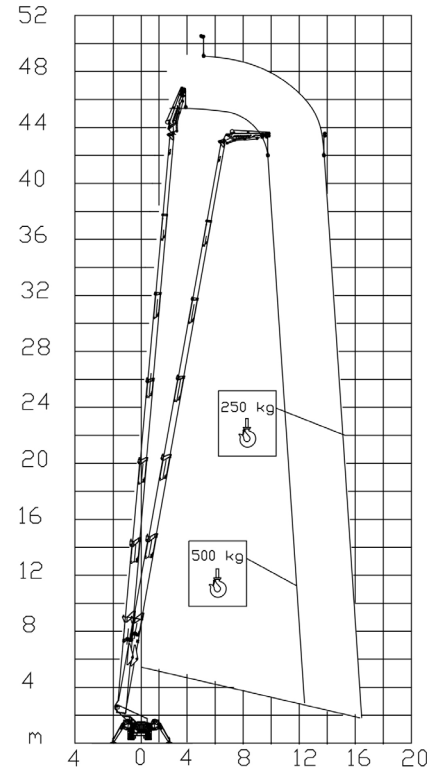
Inverter actuated  
Electric motor  
16 kW



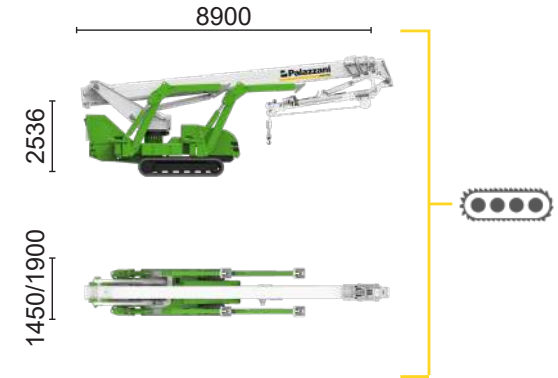
Lithium iron  
phosphate battery  
LiFePO4 - 29,1 kWh  
(48 V - 570 Ah)



Type 2 plug charge



500 kg	250 kg
12,5 m	16,5 m



XTJ 52+/C		49 m	16,5 m	500 kg	660°	240x70 cm	90°+80°	4,13-5,17 m	16%	42%	2 km/h	15000 kg	95 kN	4,49 kN/m <sup>2</sup>	7,02 kN/m <sup>2</sup>
-----------	--	------	--------	--------	------	-----------	---------	-------------	-----	-----	--------	----------	-------	------------------------	------------------------

Available power options:

**BI-ENERGY** (DIESEL+AC)

The technical data may deviate +/- 3 % from the specified values.

Characteristics and technical data are informative only and subjected to change without notice.

Palazzani Industrie S.p.A.

Via del Pavione, 4 - 25050 - Paderno F.C. (BS) - Italy

Tel. (+39) 0306857073

info@palazzani.it

www.palazzani.it



NC 1020 A 25