



ECO



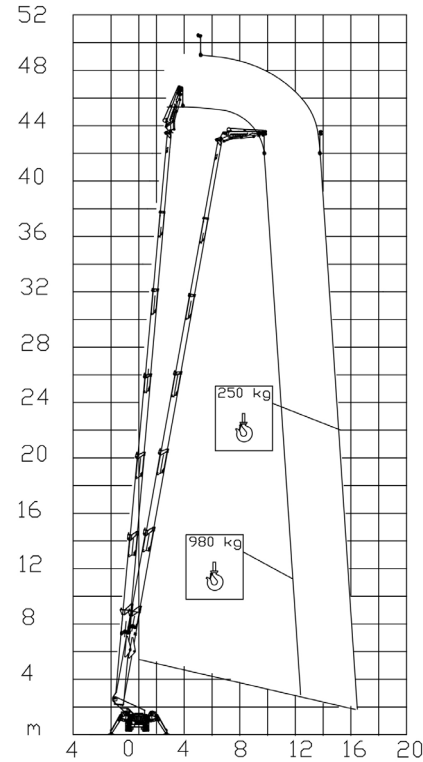
Inverter actuated
Electric motor
16 kW



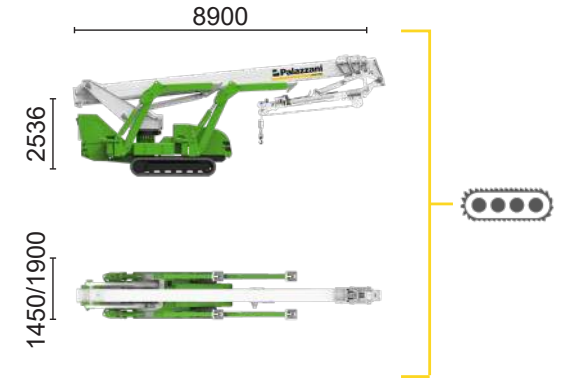
Lithium iron
phosphate battery
LiFePO4 - 29,1 kWh
(48 V - 570 Ah)



Type 2 plug charge



980 kg	250 kg
12,5 m	16,5 m



XTJ 52+/C 49 m 16,5 m 980 kg 660° 240x70 cm 90°+80° 4,13-5,17 m 16% 42% 2 km/h 15000 kg 95 kN 4,49 kN/m² 7,02 kN/m²

Available power options:

BI-ENERGY (DIESEL+AC)

The technical data may deviate +/- 3 % from the specified values.

Characteristics and technical data are informative only and subjected to change without notice.

Palazzani Industrie S.p.A.

Via del Pavione, 4 - 25050 - Paderno F.C. (BS) - Italy

Tel. (+39) 0306857073

info@palazzani.it

www.palazzani.it



NC 1021 A 25