





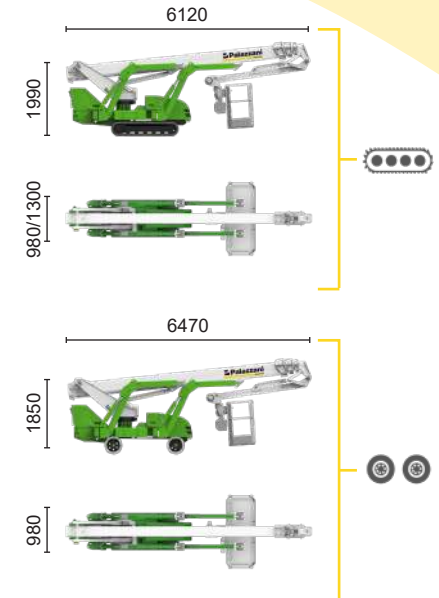
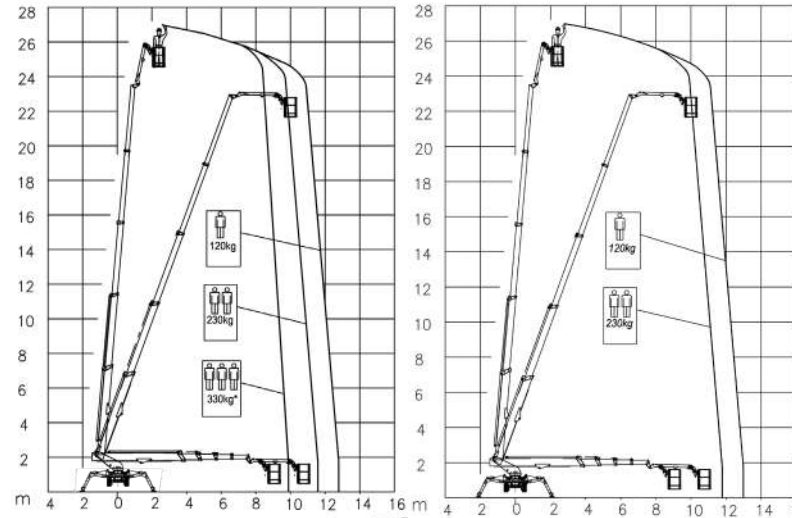
**ECO**

---

 Inverter actuated  
Electric motor  
5,5 kW

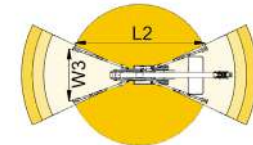
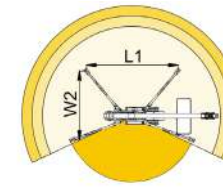
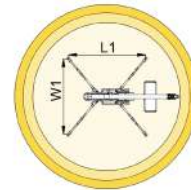
---


 Lithium iron  
phosphate battery  
LiFePO4 - 16,1 kWh  
(48 V - 315 Ah)





\*optional

9,9 m	11,6 m	12,8 m	7,3 m	11,6 m	12,8 m	7,3 m
330 kg*	230 kg	120 kg	120/230 kg	230 kg	120 kg	230/120 kg
L1	L2	W1	W2	W3	L1	L2
4927 mm	6436 mm	4791 mm	3828 mm	2865 mm	4927 mm	6436 mm



<b>TSJ 27/C</b>		27 m	12,8 m	330 kg*	660°	180x70 cm	90°+80°	2,86-4,79 m	44%	42%	1,2 km/h	4620 kg	29 kN	1,95 kN/m <sup>2</sup>	3,97 kN/m <sup>2</sup>
<b>TSJ 27/R</b>		27 m	12,8 m	330 kg*	660°	180x70 cm	90°+80°	2,86-4,79 m	44%	29%	1,2 km/h	4700 kg	29 kN	1,99 kN/m <sup>2</sup>	4,04 kN/m <sup>2</sup>

Available power options:

-  **BI-ENERGY** (DIESEL+AC)
-  **HYBRID** (DIESEL+AC+BATTERY)

The technical data may deviate +/- 3% from the specified values.

Characteristics and technical data are informative only and subjected to change without notice.

Palazzani Industrie S.p.A.

Via del Pavione, 4 - 25050 - Paderno F.C. (BS) - Italy

Tel. (+39) 0306857073

info@palazzani.it

www.palazzani.it



NC 910 A 24