



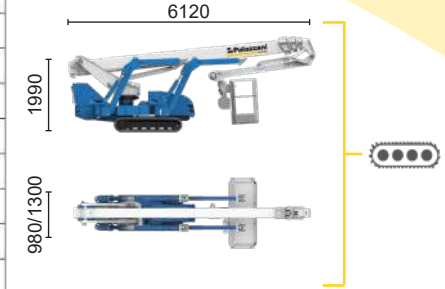
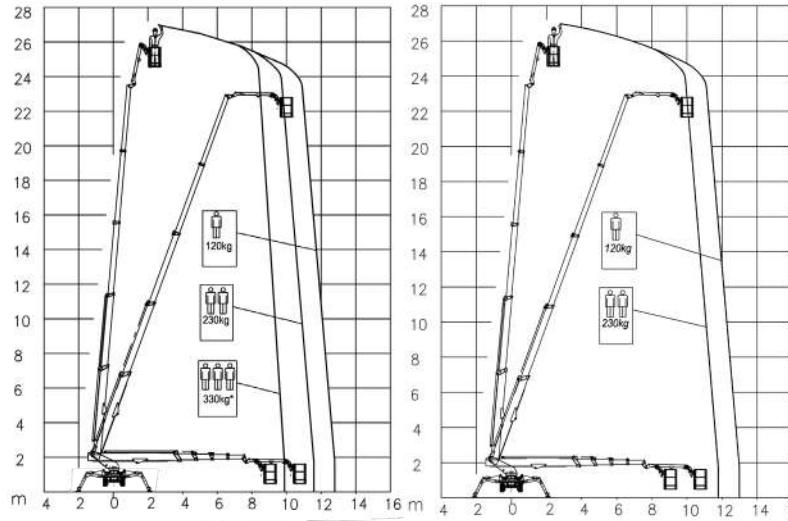


**HYBRID<sup>2</sup>**

 Diesel  
10,6 kW

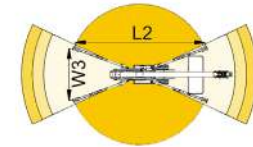
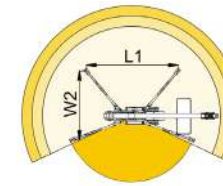
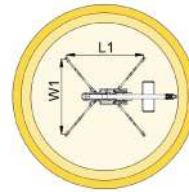
 Inverter actuated  
Electric motor  
5,5 kW

 Lithium iron  
phosphate battery  
LiFePO4 - 10,7 kWh  
(48 V - 210 Ah)



\*optional

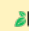
|         |         |         |            |         |         |            |         |         |         |
|---------|---------|---------|------------|---------|---------|------------|---------|---------|---------|
| 9,9 m   | 11,6 m  | 12,8 m  | 7,3 m      | 11,6 m  | 12,8 m  | 7,3 m      |         |         |         |
| 330 kg* | 230 kg  | 120 kg  | 120/230 kg | 230 kg  | 120 kg  | 230/120 kg |         |         |         |
| L1      | L2      | W1      | W2         | W3      | L1      | L2         | W1      | W2      | W3      |
| 4927 mm | 6436 mm | 4791 mm | 3828 mm    | 2865 mm | 4927 mm | 6436 mm    | 4791 mm | 3828 mm | 2865 mm |



**TSJ 27/C**  27 m 12,8 m 330 kg\* 660° 180x70 cm 90°+80° 2,86-4,79 m 44% 42% 1,2 km/h 4950 kg 29 kN 2,09 kN/m2 4,49 kN/m2

Available power options:

 **BI-ENERGY** (DIESEL+AC)

 **ECO** (AC+BATTERY)

The technical data may deviate +/- 3% from the specified values.

Characteristics and technical data are informative only and subjected to change without notice.

Palazzani Industrie S.p.A.

Via del Pavione, 4 - 25050 - Paderno F.C. (BS) - Italy

Tel. (+39) 0306857073

info@palazzani.it

www.palazzani.it



NC 912 A 24